

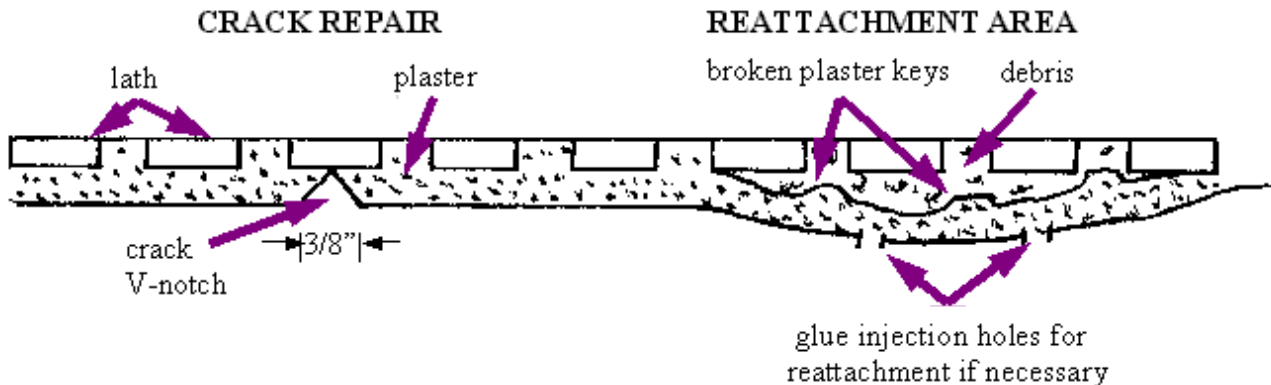


**PETER LORD PLASTER & PAINT**

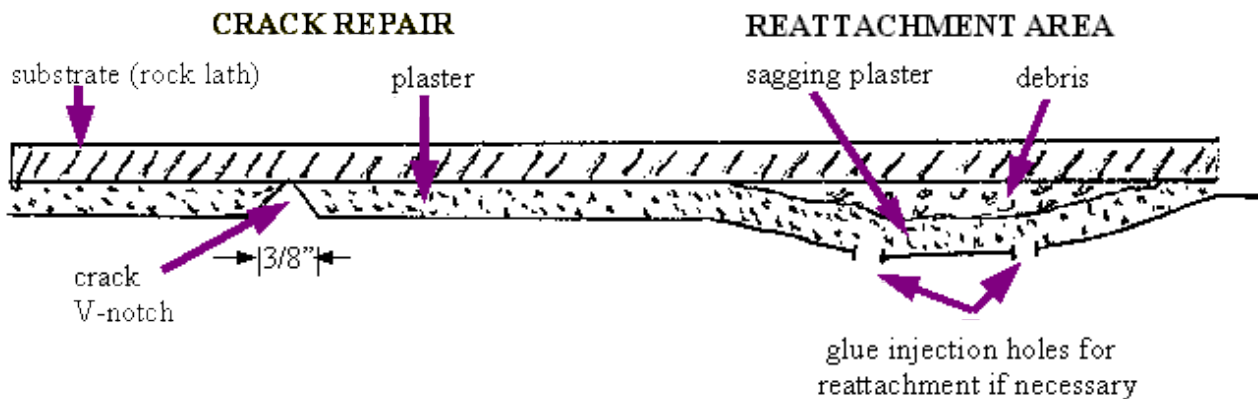
24 Moody Rd. Limington, ME 04049  
207-793-2927

## Plaster Crack Repair – Illustrated

### Repairs over wood lath



### Repairs of other substrates



### Repair Procedure:

1. Begin a crack repair by V-Notching out the crack. Remove the plaster along both sides of the crack with a utility knife to a V'd, gully section down to the substrate.
2. Any additional loose plaster around the crack can be removed at this point, and any reattachment to the sides of the crack can be completed.
3. Vacuum out and damp-sponge the notch to remove any plaster dust and residue.
4. Fill the notch using a plaster or setting joint compound. We like to use Durabond because it sets up quickly and has its own bonding agent for a solid fill. Usually 2--3 coats of filler are necessary to bring the repair flush with the surface.